

Belem Tower



Situated next to the beautiful Sefton Park in Liverpool, Belem Tower is just 10 minutes from the city centre.

Belem Tower

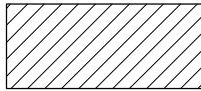
Sefton Park, Liverpool

Site Plan

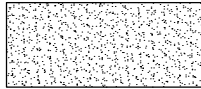


Belem Tower

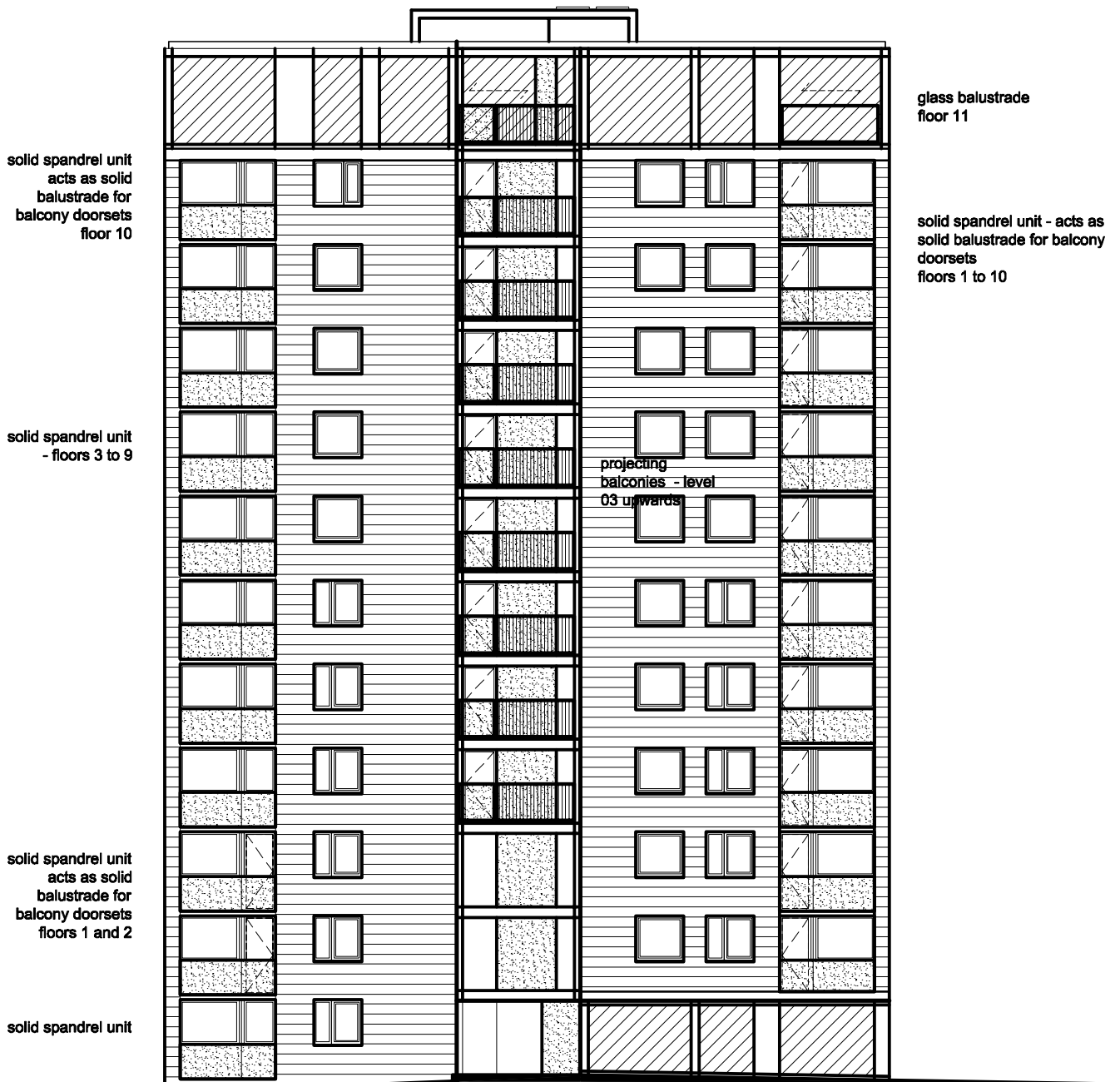
South East



infill between frame - assume provisionally
40% recessed solid aluminium panel ; 40%
glazing; 20% opaque glazing. Frame areas
ppc aluminium

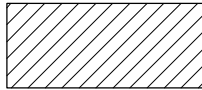


solid ppc aluminium panel

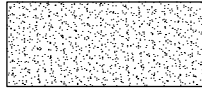


Belem Tower

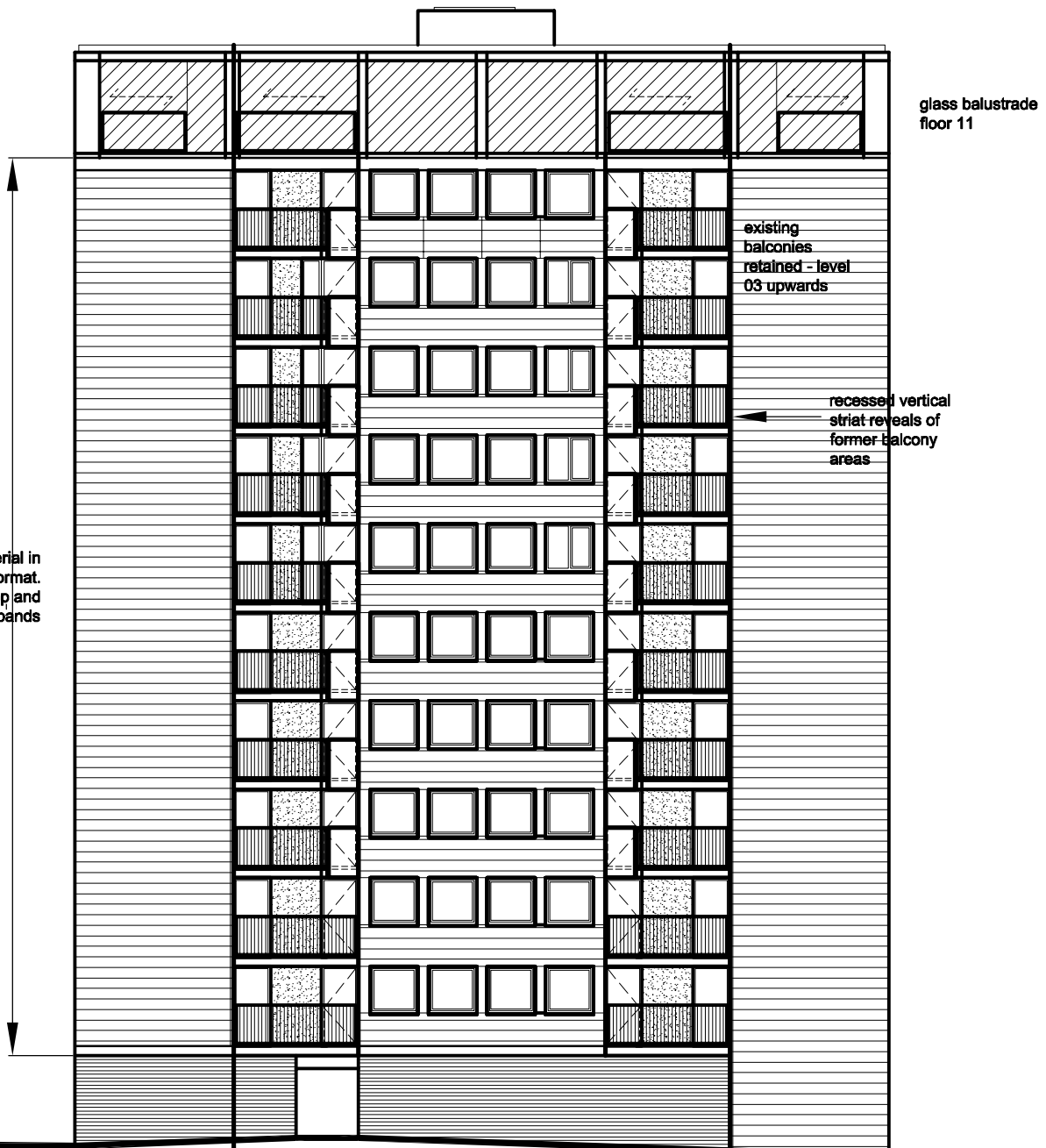
South West



infill between frame - assume provisionally
40% recessed solid aluminium panel ; 40%
glazing; 20% opaque glazing. Frame areas
ppc aluminium

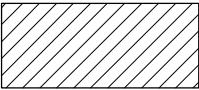


solid ppc aluminium panel

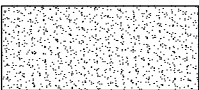


Belem Tower

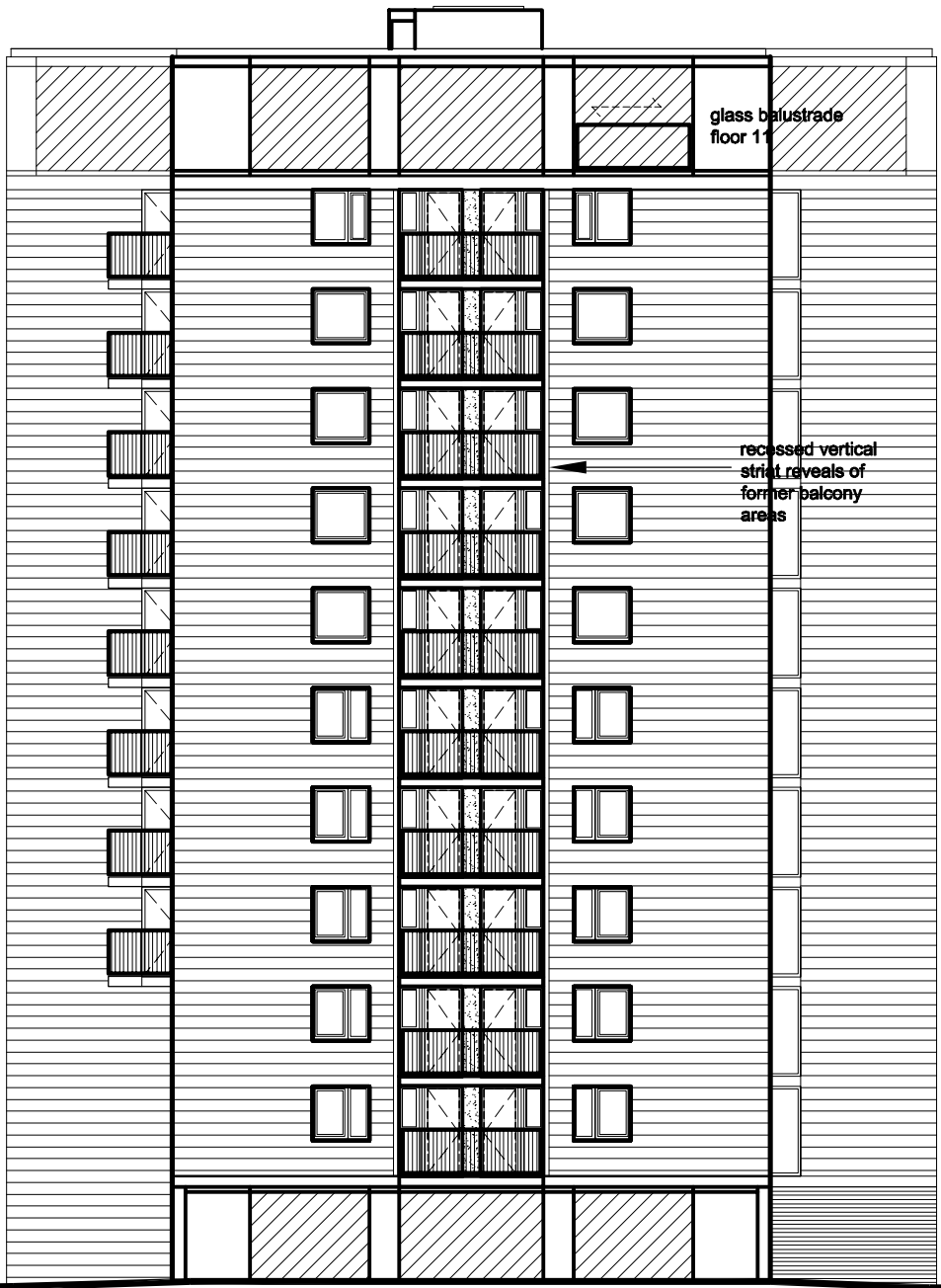
North East



infill between frame - assume provisionally
40% recessed solid aluminium panel ; 40%
glazing; 20% opaque glazing. Frame areas
ppc aluminium

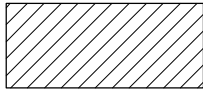


solid ppc aluminium panel

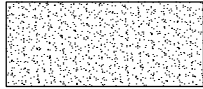


Belem Tower

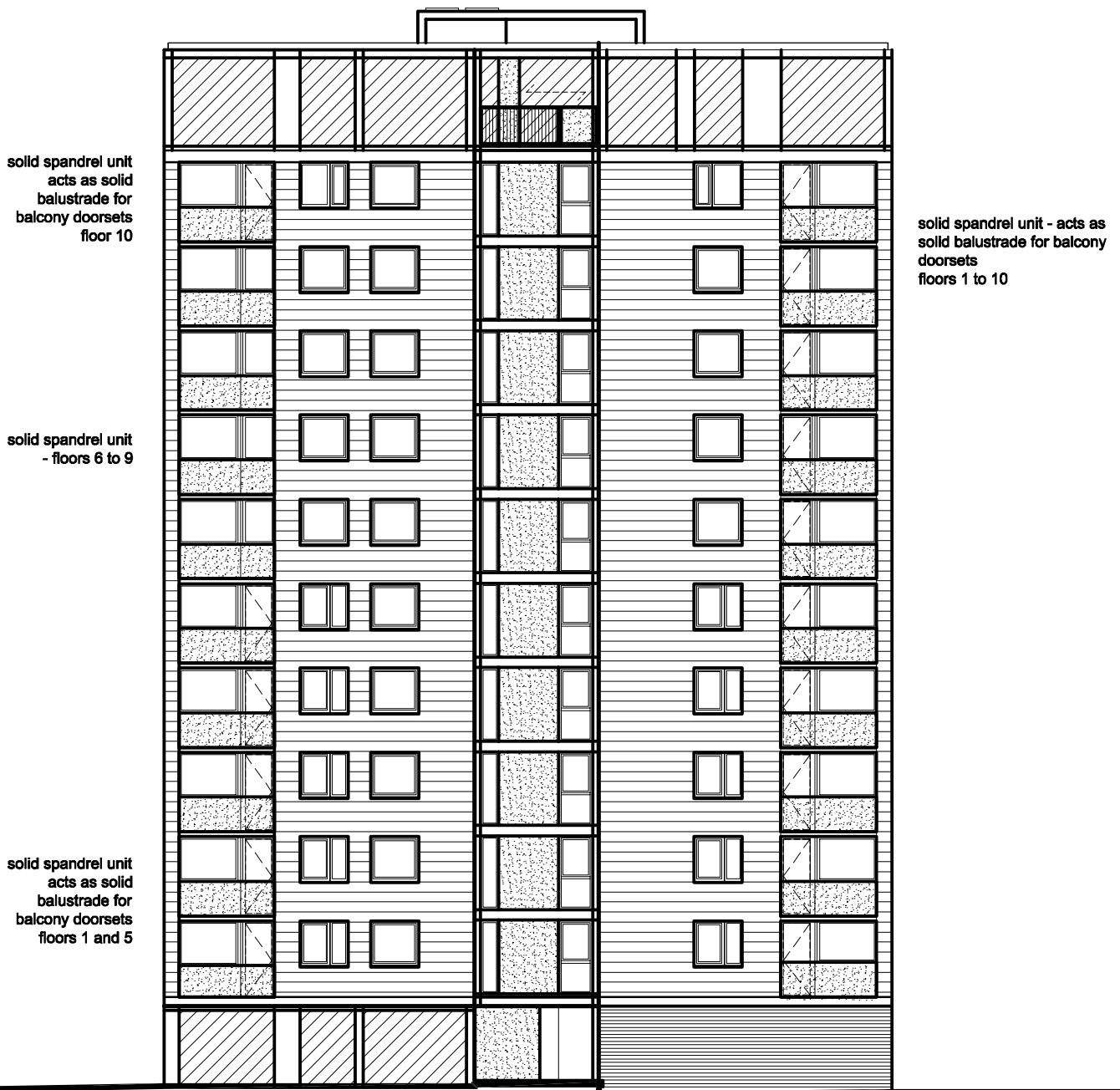
North West



infill between frame - assume provisionally
40% recessed solid aluminium panel ; 40%
glazing; 20% opaque glazing. Frame areas
ppc aluminium



solid ppc aluminium panel



Belem Tower

Example Floorplan

